



# Green Cart - Willie Bote

Garbage bin set by 7:00 a.m. and all items BAGGED inside the can.  
Call 3-1-1 or 796-1098 or visit [www.laredosolidwaste.com](http://www.laredosolidwaste.com)



## Tips for Willie Bote Use! Don't use Willie Bote like this!

# YES! SI!

The City of Laredo wants to remind you to bag all your food waste and trash before throwing it inside the can.

Follow these simple tips to keep your Willie Bote in good condition.

1. Bag all your trash especially food waste.
2. Make sure to keep lid closed at all times.
3. If extra space is needed in green can make sure you are recycling correctly since 60% of garbage is recyclable.
4. Regularly wash your can with bleach or vinegar.
5. If your can is missing a lid or is broken please call 3-1-1 to have it fixed.

### Bag your trash!

Su Basura en Bolsa!



Once a week garbage pick-up.  
Once a week recycling pick-up.

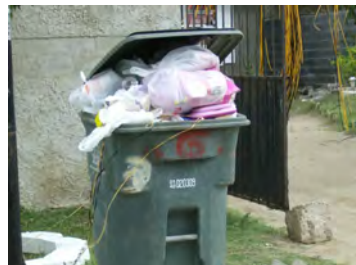
# NO! NO!



Don't set out close to vehicles and bin with the wheels facing the home.



Don't set out close to mailboxes.



Don't overfill your Willie Bote Can.



No extra trash in the sides.